



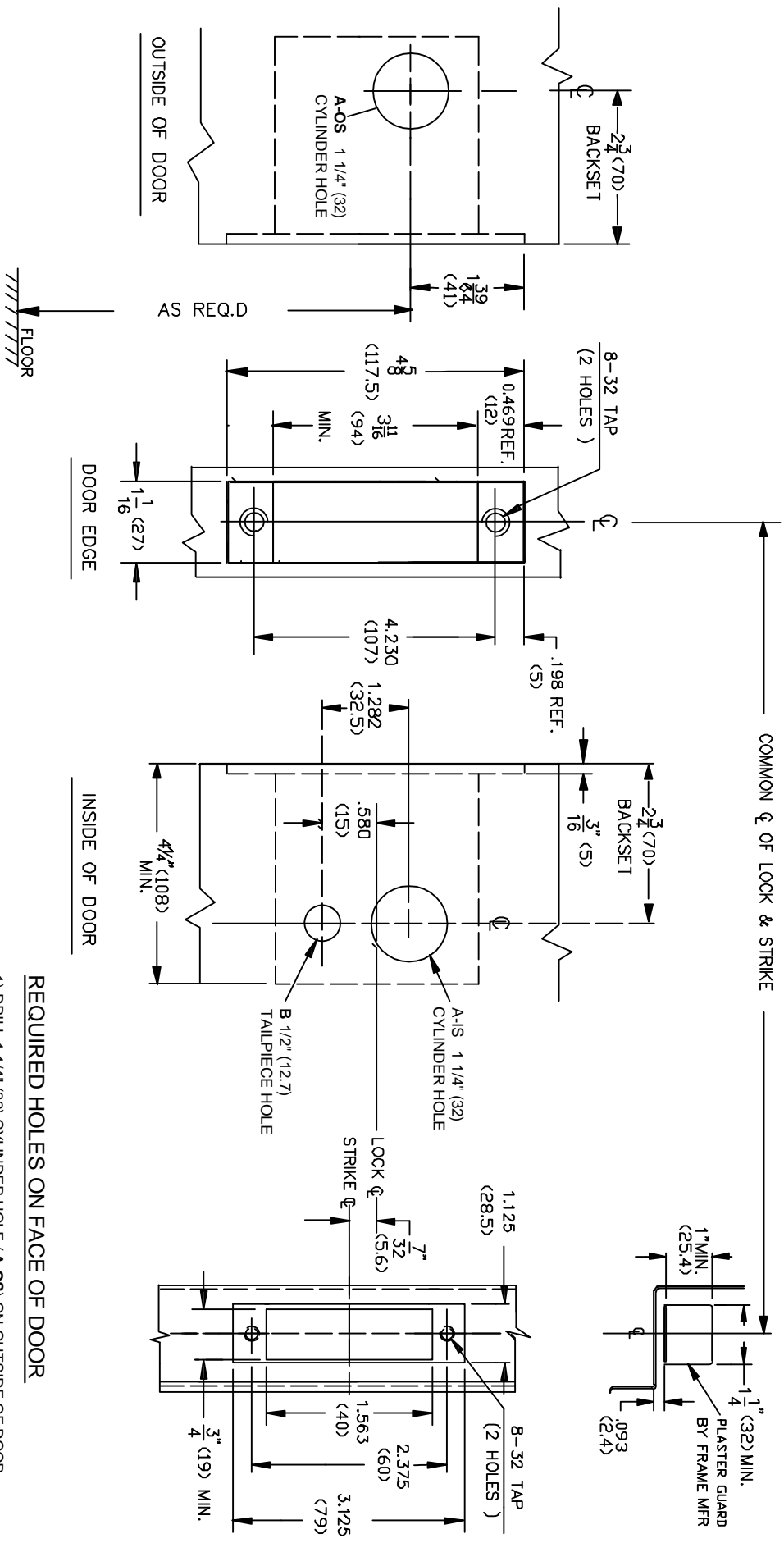
Brookline Industries  
 1624 South Clinton Street  
 Chicago, IL 60616 USA  
<http://brooklineind.com>

DIMENSIONS ARE INCHES ( ) ARE IN MILLIMETERS.

# A660 DEADBOLT CYLINDER X TURN FOR METAL DOORS

TEMPLATE NUMBER: **T-A660M Rev1**

DATE: 01-01-2006



**REQUIRED HOLES ON FACE OF DOOR**

- 1) DRILL 1 1/4" (32) CYLINDER HOLE (A-Os) ON OUTSIDE OF DOOR
- 2) DRILL 1/2" (12.7) HOLE (B) ON INSIDE OF DOOR

NOTE: TAILPIECE MOUNTING HOLE LOCATIONS VARI DEPENDING ON THE TAILPIECE. INSTALL AND DRILL MOUNTING HOLES FOR TAILPIECE AFTER LOCK BODY IS INSTALLED IN THE DOOR